



*Prime Development*

**Prime 744 - ANTELIA**



### PRIME 744 - ANTELIAS

Situated in the residential region of Fawwar Antelias, surrounded by pine trees and overlooks on Beirut Bay and the mountains.

The building is spread over 9 storeys with two 97 sqm apartments of 2 bedrooms, per floor.

Prime 744 is accessible from both Antelias – Bekfaya main road and internal Fawwar Antelias road, and at 5 minutes drive from the main highway.

### SPECIFICATIONS

#### DESIGN CRITERIA

Modern architectural aspect  
Structurally designed in accordance to earthquake and wind pressure requirements and standards

#### ELEVATIONS

Double walls providing sound & thermal insulation  
Façade finishes are rendered plaster coating  
Double glazed aluminum doors and windows, SIDEM 2000 profiles

#### INTERNAL FINISHES

Granite or ceramic flooring & skirting in all elevator and main entrance lobbies & staircase  
Granite steps for staircase and landings  
60\*60 plain ceramic first choice full body floor tiles & skirting in reception and balcony  
Lecico or equivalent ceramic floor tiles & skirting for bedrooms, kitchen & bathrooms  
Two coats finishing plaster to all exposed walls & ceilings  
Primer coat, minimum 2 putty coats and paint coats finishing for all exposed walls & ceilings

#### INTERNAL WOODWORKS

Main apartment door: Hollow core flush wood, comprising 8mm MDF on both sides with Frakkeh veneered texture, Frakkeh hardwood lipping, architraves & frames, including paint, ironmongery and all accessories needed  
Internal doors: Hollow core flush wood, comprising 8mm MDF on both sides, Swedish hardwood lipping, architraves & frames with white paint, ironmongery and all accessories needed

#### KITCHEN

Quality kitchen lower & upper melamine cabinets (EGGER or equivalent) by a specialized local supplier, granite countertop and stainless steel sink

#### AIR CONDITIONING

Electrical & drainage outlets installations for split type air conditioning for the reception and the bedrooms

#### SANITARY FIXTURES & FITTINGS

Top quality Chinese sanitary fixtures, with Italian mixers, PPR water supply & riser pipes

#### WIRING DEVICES, DISCONNECTS & PANEL BOARDS

Genuine LeGrand with wiring and cables provided by "Cable Liban"  
Panel board Schneider Electric

#### TELEPHONE & TELECOMMUNICATION SYSTEM

Telephone & data provision for the reception and bedrooms

#### AUDIO INTERCOM SYSTEM

Urmet or equivalent

#### ELEVATORS

Two high speed lifts with Italian motors, backed up with a rescue device (UPS)

#### WATER SYSTEM

150L of 4mm thickness insulated electrical water heater tank  
Common collective water tank with pump and independent distribution network filling 1000L rooftop tank for each apartment

#### WATERPROOFING

All exposed roof and flower bed areas are treated with the highest standards of waterproofing & protection

#### SECURITY

All common areas are equipped with smoke detectors and adequate ventilation systems  
Common area doors and apartment doors are fire rated; 30 minutes

#### COMMON SERVICES

2 parking lots for each apartment  
Doorkeeper room

#### QUALITY ASSURANCE

The project is supervised by the authorized quality control office BATIPLUS





Notes: \_\_\_\_\_

\_\_\_\_\_

\_\_\_\_\_

Notes: \_\_\_\_\_

\_\_\_\_\_

\_\_\_\_\_



ANTELIAS



ONGOING PROJECTS

PRIME 828 - JAL EL DIB



PRIME 380 - BKENNAYA



PRIME 88 - MEZHER



ABOUT PRIME

Established in 2007, Prime development has been encountering a remarkable growth due to its laurels and passion in real estate.

Being deeply rooted in the tremendous knowledge of the Lebanese market, our projects vary vastly from small private developments to large-scale constructions. We have executed several projects that alter from Rabweh, Antelias and Jal El Dib to Byakout and Bkennaya, as other projects are in process.

Maintaining a sustainable growth is a reputation gained by our commitment to the field along with the delivery of satisfaction towards both our clients and investors. We value our investors as we are always welcoming them with arms wide open to build a successful partnership, looking forward to a bright collaboration. Our clients, on the other hand, balance the scale in which we shepherd them through each and every step, supporting them with our expertise in the market to further deliver their expected goal. With a commitment that bold, and clients and investors that loyal we visualize being the leading real estate developers in the region.

Providing a high-end quality service that aided in our knowledge and skills in the field of construction, Prime development has earned a stellar reputation for its dedication to the development of fashionable properties distinguished by sophisticated design and execution.

Whether you are searching for your first home or moving on to your next, we promise to deliver an exquisite experience worth remembering.

READY TO MOVE

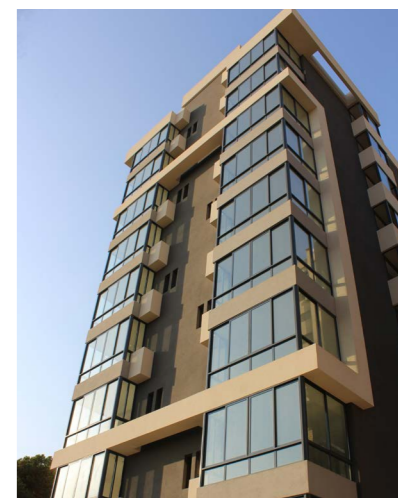
PRIME 389 - BKENNAYA



PRIME 698 - ANTELIAS



PRIME 754 - ANTELIAS



## PRIME DEVELOPMENT S.A.L

Jal El Dib, Mallah Centre, 3rd Floor, Maten – Lebanon

T: 00961 4 718019  
M: 00961 70 309050

E: [info@primedevelopment.me](mailto:info@primedevelopment.me)  
W: [www.primedevelopment.me](http://www.primedevelopment.me)

**Follow us for the newest offers and updates**



**or visit our offices**

Scan for location

